

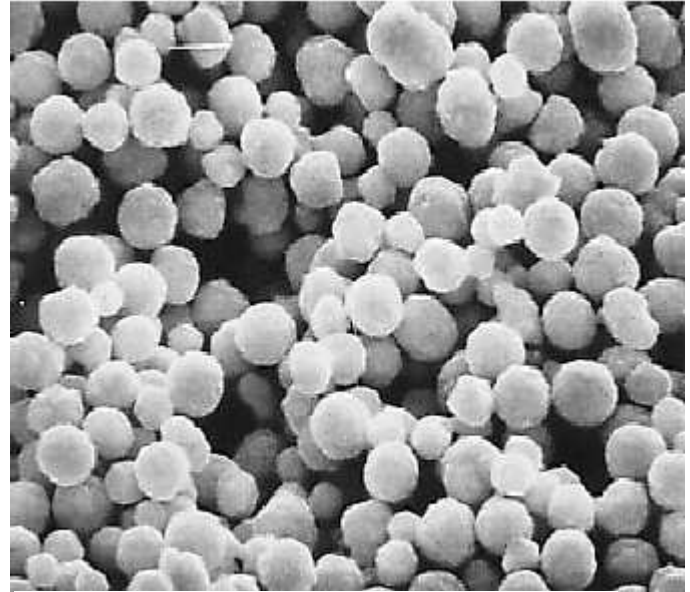


Pd Powder Pd 200S

Cermet produces a monodispersed chemically precipitated spherical Pd powder with SEM particle diameter of 0.8 μm . This product compliments Cermet's established Pd 200 series powders. Targeted for ultra thin and smooth MLCC internal electrode applications, this powder is available in production lot sizes in excess of 30kgs.

These powders are also available with a variety of organic and inorganic coatings to modify oxidation, shrinkage, and wetting characteristics.

We welcome the opportunity to develop new products for your unique requirements.



10kx SEM of Pd 200S

TYPICAL POWDER CHARACTERISTICS

Characteristics	Parameter	Procedure
Surface Area (m^2/g)	0.6 – 1.3	BET Method
Tap Density (g/cm^3)	3.0 – 5.5	Tap-Pak Volumeter
PSD D90 (μm)	1.0 – 3.0	Horiba CAPA
PSD D50 (μm)	0.5 – 2.5	Horiba CAPA
PSD D10 (μm)	0.2 – 1.6	Horiba CAPA

The descriptions and engineering data shown here have been compiled by Cermet using commonly-accepted procedures, in conjunction with modern testing equipment, and have been compiled as according to the latest factual knowledge in our possession. The information was up-to date on the date this document was printed (latest versions can always be supplied upon request). Although the data is considered accurate, we cannot guarantee accuracy, the results obtained from its use, or any patent infringement resulting from its use (unless this is contractually and explicitly agreed in writing, in advance). The data is supplied on the condition that the user shall conduct tests to determine materials suitability for a particular application. R06.03

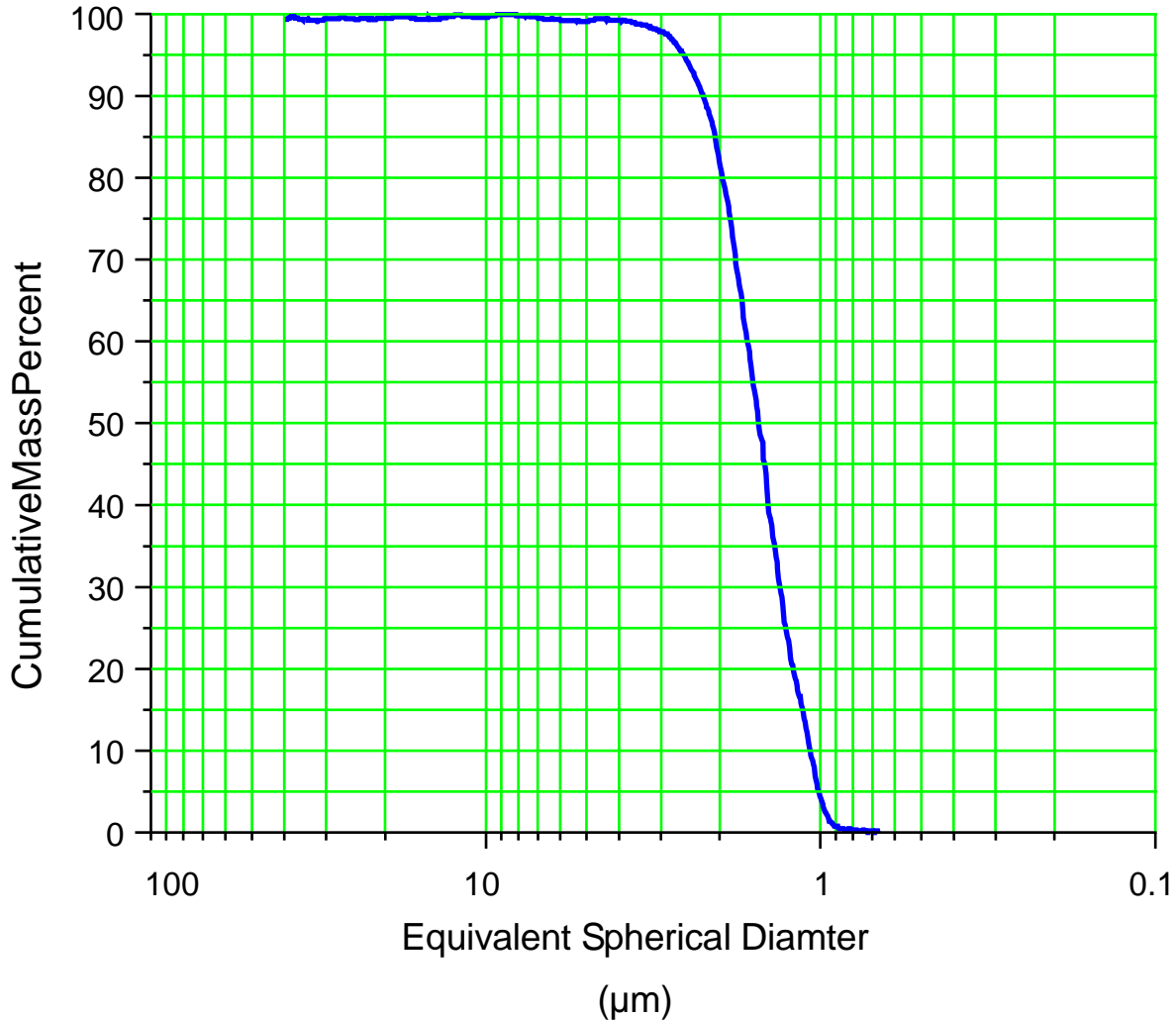
U.S. Head Office
Cermet Materials Incorporated
6 Mecco Drive
Wilmington, DE 19804, U.S.A.
TEL: (302) 999-1447
Fax: (302) 999-7211
Email: pansy@cermetmaterials.com

Far East Office
Cermet Materials (Far East) CO., LTD
Room 1003, 10th Floor Workingberg Commercial Bldg.
41-47 Marble Road, North Point, Hong Kong
TEL: (852) 2811-5889
Fax: (852) 2960-0507
Email: albertong@cermet.com.hk



Pd Powder Pd 200S

Typical Pd 200S Particle Size Distribution Characteristics



Micromeritics Sedigraph 5100, A12 Sedisperse Media

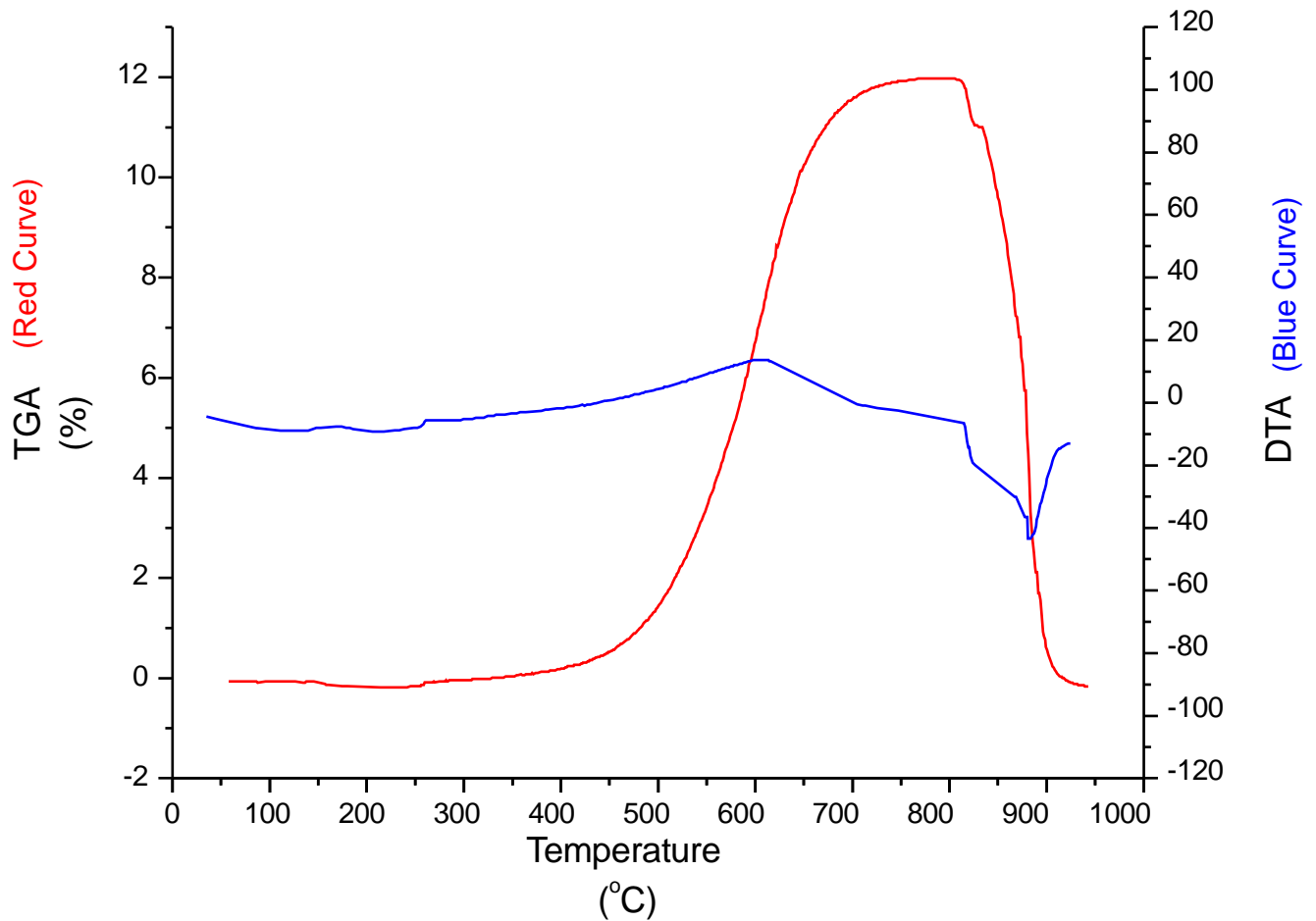
The descriptions and engineering data shown here have been compiled by Cermet using commonly-accepted procedures, in conjunction with modern testing equipment, and have been compiled as according to the latest factual knowledge in our possession. The information was up-to date on the date this document was printed (latest versions can always be supplied upon request). Although the data is considered accurate, we cannot guarantee accuracy, the results obtained from its use, or any patent infringement resulting from its use (unless this is contractually and explicitly agreed in writing, in advance). The data is supplied on the condition that the user shall conduct tests to determine materials suitability for a particular application. R06.03

U.S. Head Office
Cermet Materials Incorporated
6 Mecco Drive
Wilmington, DE 19804, U.S.A.
TEL: (302) 999-1447
Fax: (302) 999-7211
Email: pansy@cermetmaterials.com

Far East Office
Cermet Materials (Far East) CO., LTD
Room 1003, 10th Floor Workingberg Commercial Bldg.
41-47 Marble Road, North Point, Hong Kong
TEL: (852) 2811-5889
Fax: (852) 2960-0507
Email: albertong@cermet.com.hk

Pd Powder Pd 200S

Pd 200S Typical Thermal Characteristics



Netzsch STA 449
Scan Rate: $10^{\circ}\text{C min}^{-1}$ in air

The descriptions and engineering data shown here have been compiled by Cermet using commonly-accepted procedures, in conjunction with modern testing equipment, and have been compiled as according to the latest factual knowledge in our possession. The information was up-to date on the date this document was printed (latest versions can always be supplied upon request). Although the data is considered accurate, we cannot guarantee accuracy, the results obtained from its use, or any patent infringement resulting from its use (unless this is contractually and explicitly agreed in writing, in advance). The data is supplied on the condition that the user shall conduct tests to determine materials suitability for a particular application. R06.03

U.S. Head Office
Cermet Materials Incorporated
6 Mecco Drive
Wilmington, DE 19804, U.S.A.
TEL: (302) 999-1447
Fax: (302) 999-7211
Email: pansy@cermetmaterials.com

Far East Office
Cermet Materials (Far East) CO., LTD
Room 1003, 10th Floor Workingberg Commercial Bldg.
41-47 Marble Road, North Point, Hong Kong
TEL: (852) 2811-5889
Fax: (852) 2960-0507
Email: albertong@cermet.com.hk