



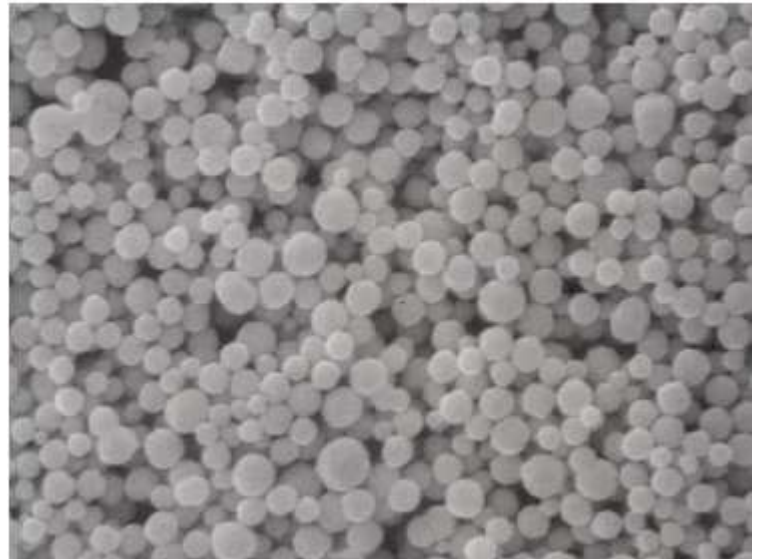
## 70%Ag / 30%Pd Powder AgPd 7001 Series

---

Cermet's 70%Ag / 30%Pd AgPd 7001 powder is a highly alloyed, monosized spherical powder, finding wide spread use as an inner electrode in the production of multilayer ceramic capacitors and as a thick film conductor. This powder demonstrates good dispersion characteristics and is ideal in applications where smooth and thin conductive metallizations are required with low metal laydowns.

Cermet 70%Ag / 30%Pd metal powders are also available with a variety of organic and inorganic coatings to affect shrinkage oxidation, and wetting characteristics.

We welcome the opportunity to develop new products for your unique requirements.



10kx SEM of 70%Ag / 30%Pd AgPd 7001

### TYPICAL POWDER CHARACTERISTICS

Characteristics	Parameter	Procedure
Surface Area (m <sup>2</sup> /g)	1.1-2.2	BET Method
Tap Density (g/cm <sup>3</sup> )	2.5-5.0	Tap-Pak Volumeter
PSD D90 (µm)	0.6-2.3	Horiba CAPA
PSD D50 (µm)	0.3-1.5	Horiba CAPA
PSD D10 (µm)	0.1-0.9	Horiba CAPA

The descriptions and engineering data shown here have been compiled by Cermet using commonly-accepted procedures, in conjunction with modern testing equipment, and have been compiled as according to the latest factual knowledge in our possession. The information was up-to date on the date this document was printed (latest versions can always be supplied upon request). Although the data is considered accurate, we cannot guarantee accuracy, the results obtained from its use, or any patent infringement resulting from its use (unless this is contractually and explicitly agreed in writing, in advance). The data is supplied on the condition that the user shall conduct tests to determine materials suitability for a particular application. R06.03

U.S. Head Office  
**Cermet Materials Incorporated**  
6 Mecco Drive  
Wilmington, DE 19804, U.S.A.  
TEL: (302) 999-1447  
Fax: (302) 999-7211  
Email: [pansy@cermetmaterials.com](mailto:pansy@cermetmaterials.com)

Far East Office  
**Cermet Materials (Far East) CO., LTD**  
Room 1003, 10<sup>th</sup> Floor Workingberg Commercial Bldg.  
41-47 Marble Road, North Point, Hong Kong  
TEL: (852) 2811-5889  
Fax: (852) 2960-0507  
Email: [albertong@cermet.com.hk](mailto:albertong@cermet.com.hk)

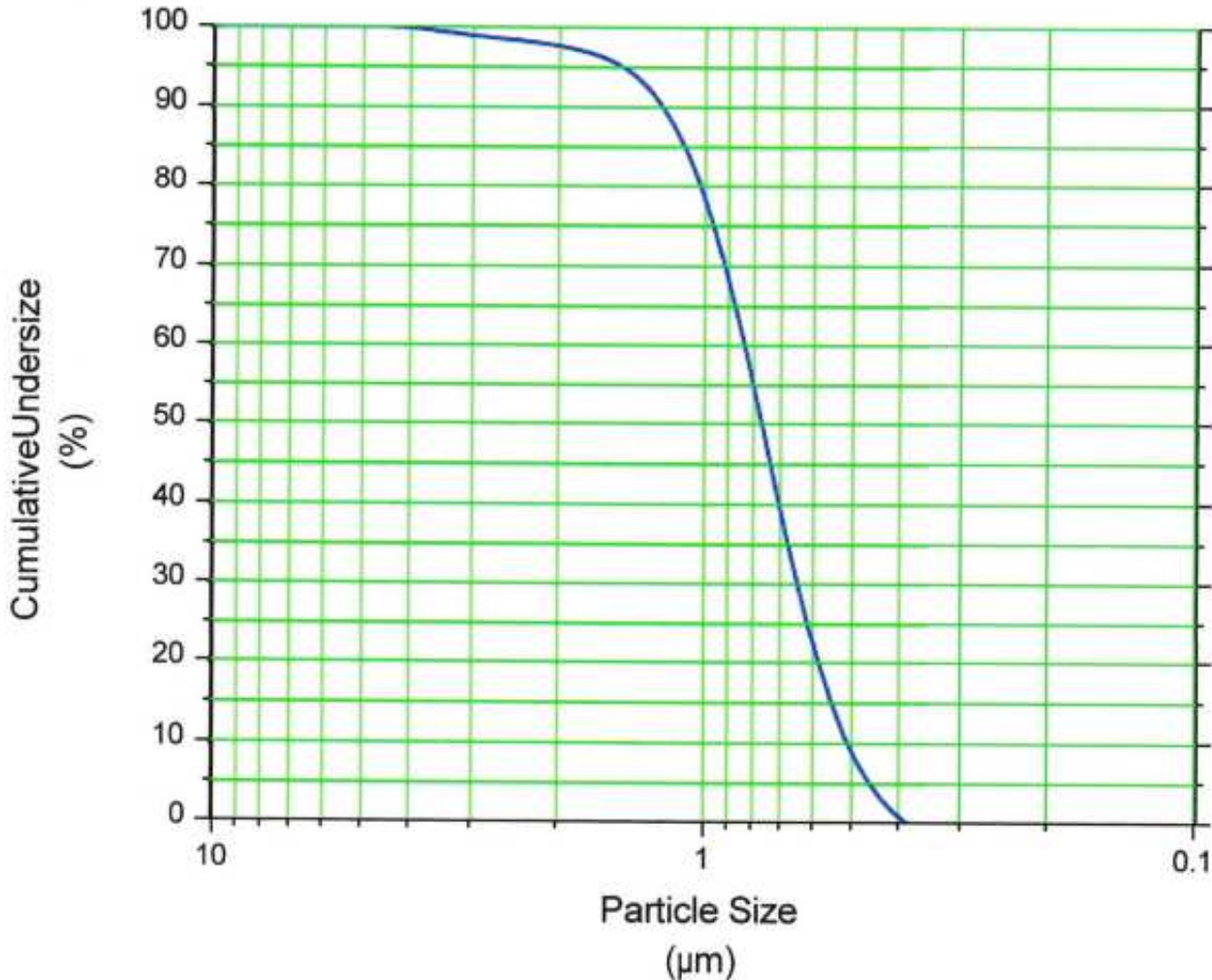


# CERMET

## 70%Ag / 30%Pd Powder AgPd 7001 Series

---

Typical AgPd 7001 Particle Size Distribution Characteristics



*Micromeritics Sedigraph 5100, A12 Sedisperse Media*

The descriptions and engineering data shown here have been compiled by Cermet using commonly-accepted procedures, in conjunction with modern testing equipment, and have been compiled as according to the latest factual knowledge in our possession. The information was up-to date on the date this document was printed (latest versions can always be supplied upon request). Although the data is considered accurate, we cannot guarantee accuracy, the results obtained from its use, or any patent infringement resulting from its use (unless this is contractually and explicitly agreed in writing, in advance). The data is supplied on the condition that the user shall conduct tests to determine materials suitability for a particular application.

R06.03

U.S. Head Office  
**Cermet Materials Incorporated**  
6 Mecro Drive  
Wilmington, DE 19804, U.S.A.  
TEL: (302) 999-1447  
Fax: (302) 999-7211  
Email: [pansy@cermetmaterials.com](mailto:pansy@cermetmaterials.com)

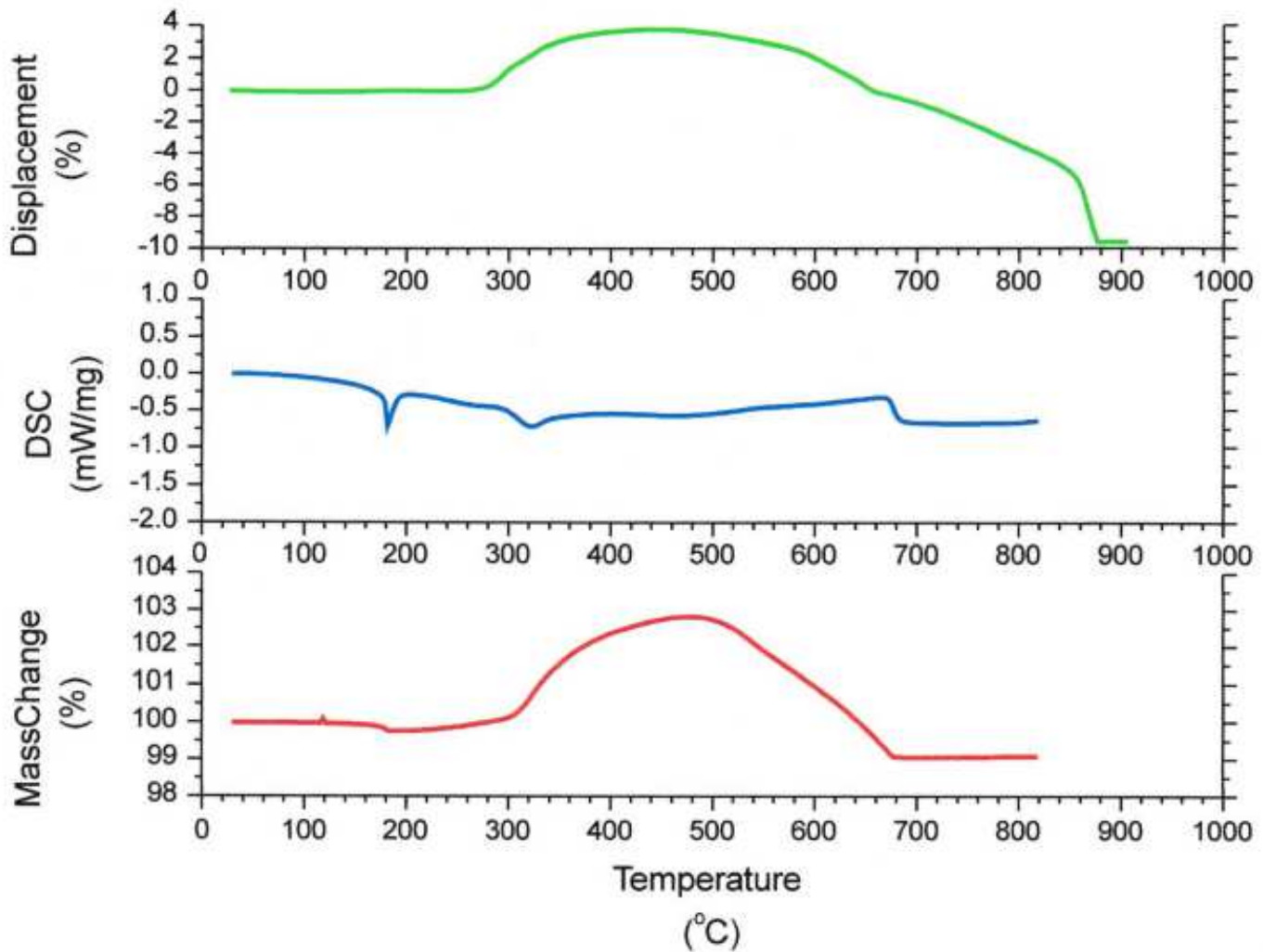
Far East Office  
**Cermet Materials (Far East) CO., LTD**  
Room 1003, 10<sup>th</sup> Floor Workingberg Commercial Bldg.  
41-47 Marble Road, North Point, Hong Kong  
TEL: (852) 2811-5889  
Fax: (852) 2960-0507  
Email: [albertong@cermet.com.hk](mailto:albertong@cermet.com.hk)



# CERMET

## 70%Ag / 30%Pd Powder AgPd 7001 Series

AgPd 7001 Typical Thermal Characteristics



Netzsch STA 449, DIL 402C  
Scan Rate: 10°C min<sup>-1</sup> in air

The descriptions and engineering data shown here have been compiled by Cermet using commonly-accepted procedures, in conjunction with modern testing equipment, and have been compiled as according to the latest factual knowledge in our possession. The information was up-to date on the date this document was printed (latest versions can always be supplied upon request). Although the data is considered accurate, we cannot guarantee accuracy, the results obtained from its use, or any patent infringement resulting from its use (unless this is contractually and explicitly agreed in writing, in advance). The data is supplied on the condition that the user shall conduct tests to determine materials suitability for a particular application.

R06.03

U.S. Head Office  
**Cermet Materials Incorporated**  
6 Meco Drive  
Wilmington, DE 19804, U.S.A.  
TEL: (302) 999-1447  
Fax: (302) 999-7211  
Email: [pany@cermetmaterials.com](mailto:pany@cermetmaterials.com)

Far East Office  
**Cermet Materials (Far East) CO., LTD**  
Room 1003, 10<sup>th</sup> Floor Workingberg Commercial Bldg.  
41-47 Marble Road, North Point, Hong Kong  
TEL: (852) 2811-5889  
Fax: (852) 2960-0507  
Email: [albertong@cermet.com.hk](mailto:albertong@cermet.com.hk)

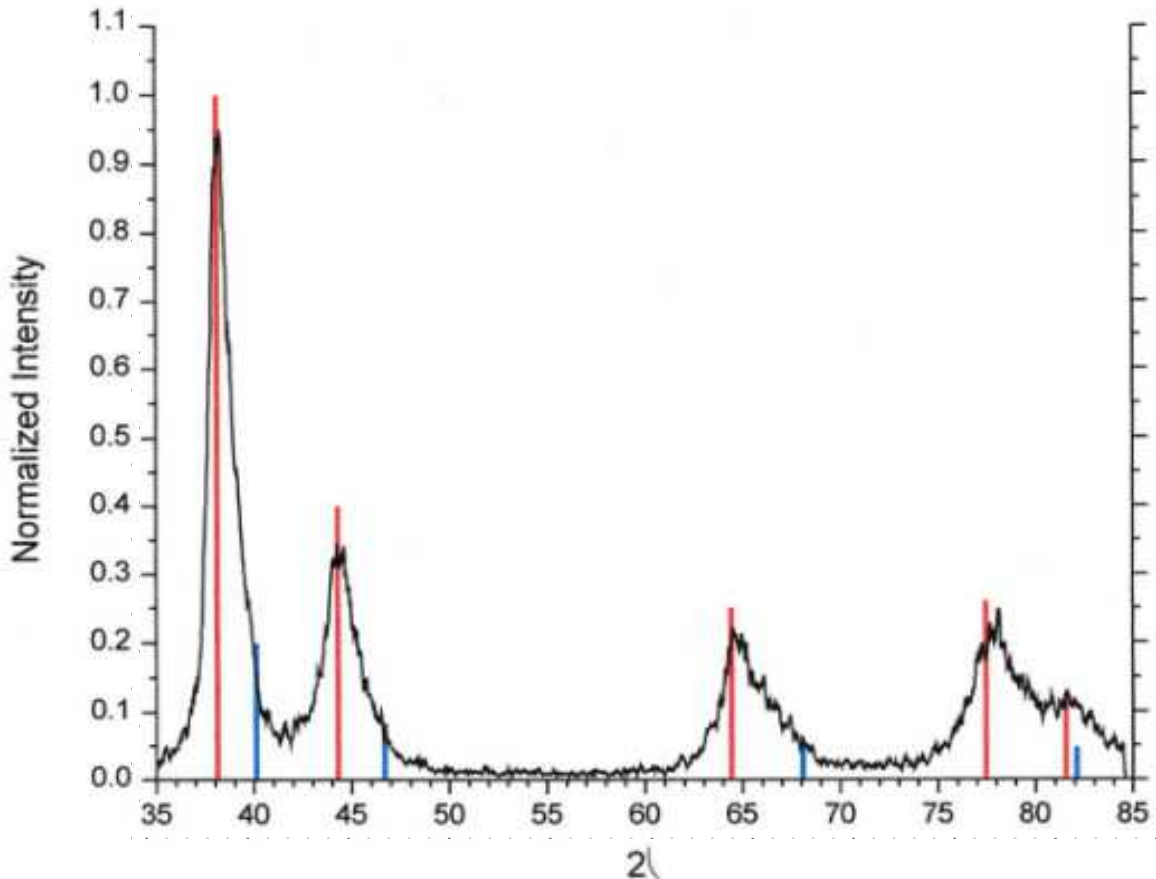


# CERMET

## 70%Ag / 30%Pd Powder AgPd 7001 Series

---

**X-Ray Diffraction Pattern of 70% Ag / 30% Pd 7001 Powder**



Siemens D500 Diffraktometer  
1200 WATTS, Step Size 0.03, Dwell 1.0 s

The descriptions and engineering data shown here have been compiled by Cermet using commonly-accepted procedures, in conjunction with modern testing equipment, and have been compiled as according to the latest factual knowledge in our possession. The information was up-to date on the date this document was printed (latest versions can always be supplied upon request). Although the data is considered accurate, we cannot guarantee accuracy, the results obtained from its use, or any patent infringement resulting from its use (unless this is contractually and explicitly agreed in writing, in advance). The data is supplied on the condition that the user shall conduct tests to determine materials suitability for a particular application.

R06.03

U.S. Head Office  
**Cermet Materials Incorporated**  
6 Mecro Drive  
Wilmington, DE 19804, U.S.A.  
TEL: (302) 999-1447  
Fax: (302) 999-7211  
Email: [pansy@cermetmaterials.com](mailto:pansy@cermetmaterials.com)

Far East Office  
**Cermet Materials (Far East) CO., LTD**  
Room 1003, 10<sup>th</sup> Floor Workingberg Commercial Bldg.  
41-47 Marble Road, North Point, Hong Kong  
TEL: (852) 2811-5889  
Fax: (852) 2960-0507  
Email: [albertong@cermet.com.hk](mailto:albertong@cermet.com.hk)