



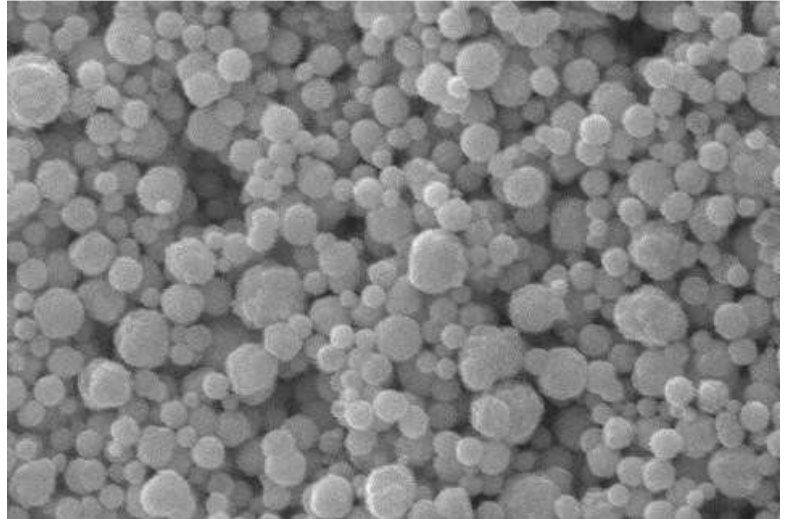
## 44%Ag / 56%Pd Powder AgPd 7013 Series

---

Cermet's 44%Ag/56%Pd AgPd 7013 powder is a highly alloyed, monosized spherical powder, designed for use in inner electrode applications. This powder demonstrates good dispersion characteristics and is ideal in applications where smooth, thin, and low laydown conductive metallizations are required.

Cermet 44%Ag/56%Pd metal powders are also available with a variety of organic and inorganic coatings to affect shrinkage, oxidation, and wetting characteristics.

We welcome the opportunity to develop new products for your new requirements.



10kx SEM of 44%Ag/ 56%Pd 7013

### TYPICAL POWDER CHARACTERISTICS

Characteristics	Parameter	Procedure
Surface Area (m <sup>2</sup> /g)	1.6 – 2.6	BET Method
Tap Density (g/cm <sup>3</sup> )	2.5 – 4.0	Tap-Pak Volumeter
PSD 90 (µm)	0.6 – 2.5	Horiba CAPA
PSD 50 (µm)	0.4 – 1.2	Horiba CAPA
PSD 10 (µm)	0.2 – 0.8	Horiba CAPA

---

The descriptions and engineering data shown here have been compiled by Cermet using commonly-accepted procedures, in conjunction with modern testing equipment, and have been compiled as according to the latest factual knowledge in our possession. The information was up-to date on the date this document was printed (latest versions can always be supplied upon request). Although the data is considered accurate, we cannot guarantee accuracy, the results obtained from its use, or any patent infringement resulting from its use (unless this is contractually and explicitly agreed in writing, in advance). The data is supplied on the condition that the user shall conduct tests to determine materials suitability for a particular application. R06.03

U.S. Head Office  
**Cermet Materials Incorporated**  
6 Mecco Drive  
Wilmington, DE 19804, U.S.A.  
TEL: (302) 999-1447  
Fax: (302) 999-7211  
Email: [pansy@cermetmaterials.com](mailto:pansy@cermetmaterials.com)

Far East Office  
**Cermet Materials (Far East) CO., LTD**  
Room 1003, 10<sup>th</sup> Floor Workingberg Commercial Bldg.  
41-47 Marble Road, North Point, Hong Kong  
TEL: (852) 2811-5889  
Fax: (852) 2960-0507  
Email: [albertong@cermet.com.hk](mailto:albertong@cermet.com.hk)