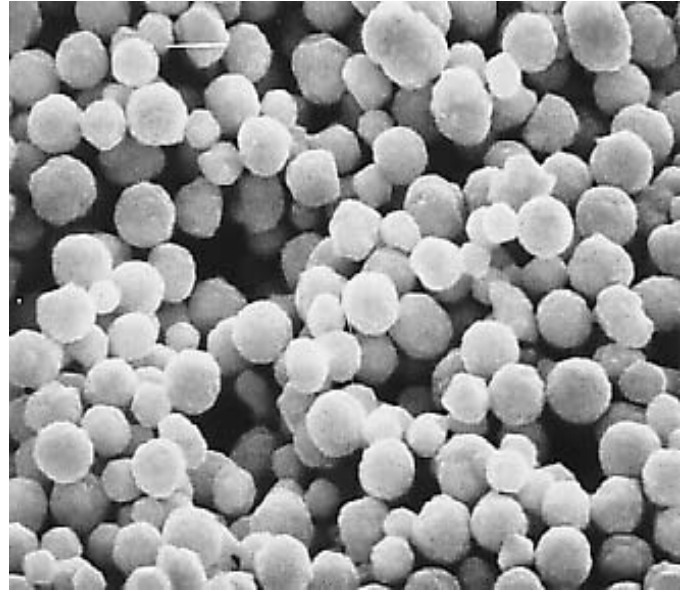


Pd Powder Pd 200S

Cermet produces a monodispersed chemically precipitated spherical Pd powder with SEM particle diameter of 0.8 μm . This product compliments Cermet's established Pd 200 series powders. Targeted for ultra thin and smooth MLCC internal electrode applications, this powder is available in production lot sizes in excess of 1000 T-oz.

These powders are also available with a variety of organic and inorganic coatings to modify oxidation, shrinkage, and wetting characteristics.

We welcome the opportunity to develop new products for your unique requirements.



SEM of Pd 200S at 10,000X — 1 μm

TYPICAL POWDER CHARACTERISTICS

Characteristic	Parameter	Procedure
SEM Diameter (μm)	0.4 – 1.2	10,000 X
Surface Area (m^2/g)	0.7 – 1.0	BET Method, Flowsorb 2300
Tap Density (g/cm^3)	3.0 – 4.5	Tap-Pak Volumeter
PSD D90 (μm)	1.8 – 3.0	Sedigraph 5100
PSD D50 (μm)	1.0 – 2.5	Sedigraph 5100
PSD D10 (μm)	0.6 – 1.5	Sedigraph 5100

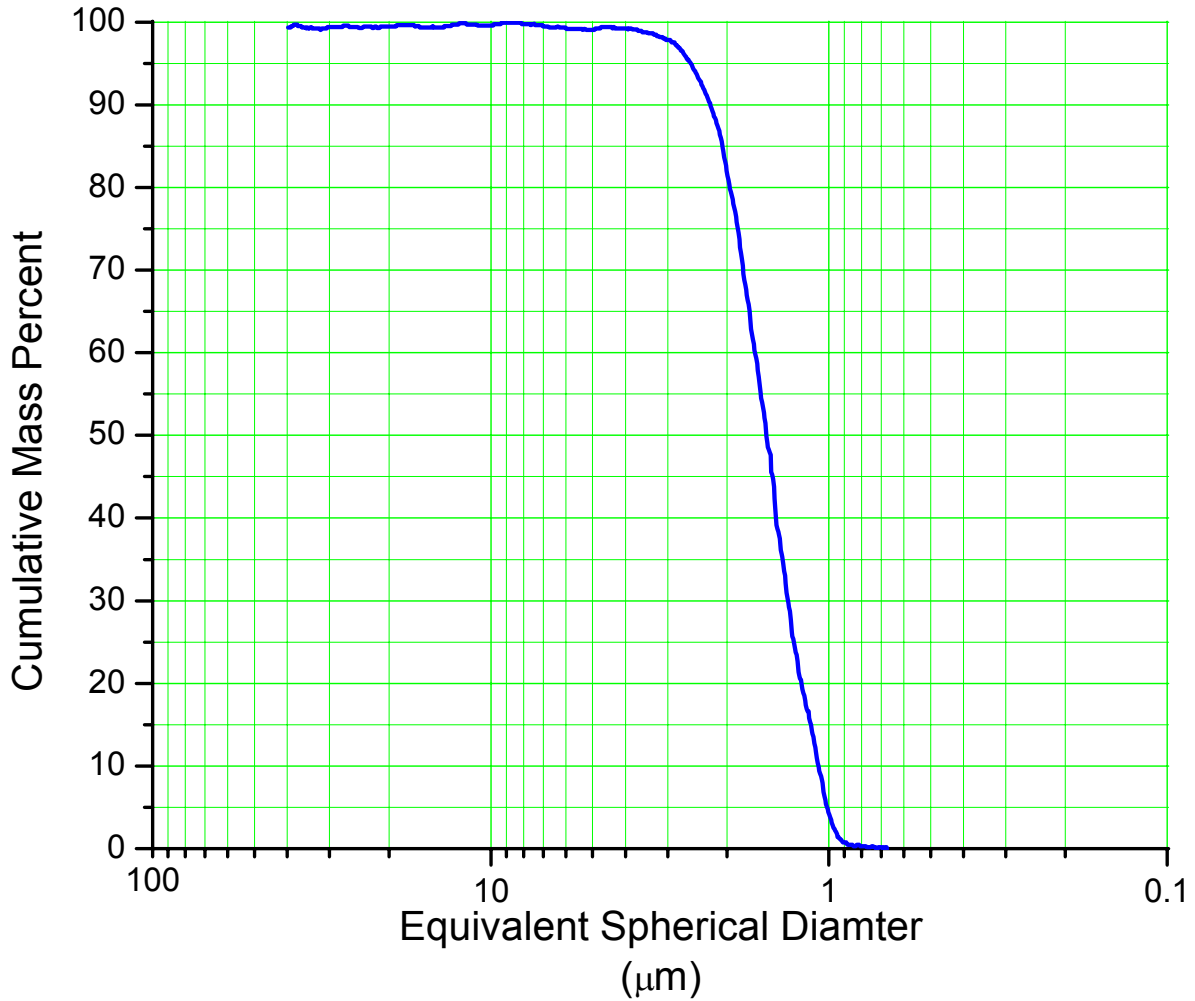
R06.03

U.S. HEAD OFFICE
CERMET MATERIALS INCORPORATED
 6 MECO DRIVE
 WILMINGTON, DELAWARE 19804
 U.S.A.
 TEL : (302) 999-1447
 FAX : (302) 999-7211
 EMAIL : cmi@cermetmaterials.com

EUROPEAN OFFICE
CERMET MATERIALS (EUROPE) LTD.
 P.O. BOX 55
 Llanelli
 SA14 7YA, WALES, U.K.
 TEL : (01269) 842-042
 FAX : (01269) 831-777
 EMAIL : steve@cermetmaterials.com

FAR EAST OFFICE
CERMET MATERIALS (FAR EAST) CO., LTD.
 ROOM 1003, 10TH FLOOR
 WORKINGBERG COMMERCIAL BLDG.
 41-47 MARBLE ROAD, NORTH POINT, HONG KONG
 TEL : (852) 2811 5889
 FAX : (852) 2960 0507
 EMAIL : albert@cermetmaterials.com

Typical Pd 200S Particle Size Distribution Characteristics



Micromeritics Sedigraph 5100, A12 Sedisperse Media

R06.03

U.S. HEAD OFFICE
CERMET MATERIALS INCORPORATED
 6 MECO DRIVE
 WILMINGTON, DELAWARE 19804
 U.S.A.
 TEL : (302) 999-1447
 FAX : (302) 999-7211
 EMAIL : cmi@cermetmaterials.com

EUROPEAN OFFICE
CERMET MATERIALS (EUROPE) LTD.
 P.O. BOX 55
 Llanelli
 SA14 7YA, WALES, U.K.
 TEL : (01269) 842-042
 FAX : (01269) 831-777
 EMAIL : steve@cermetmaterials.com

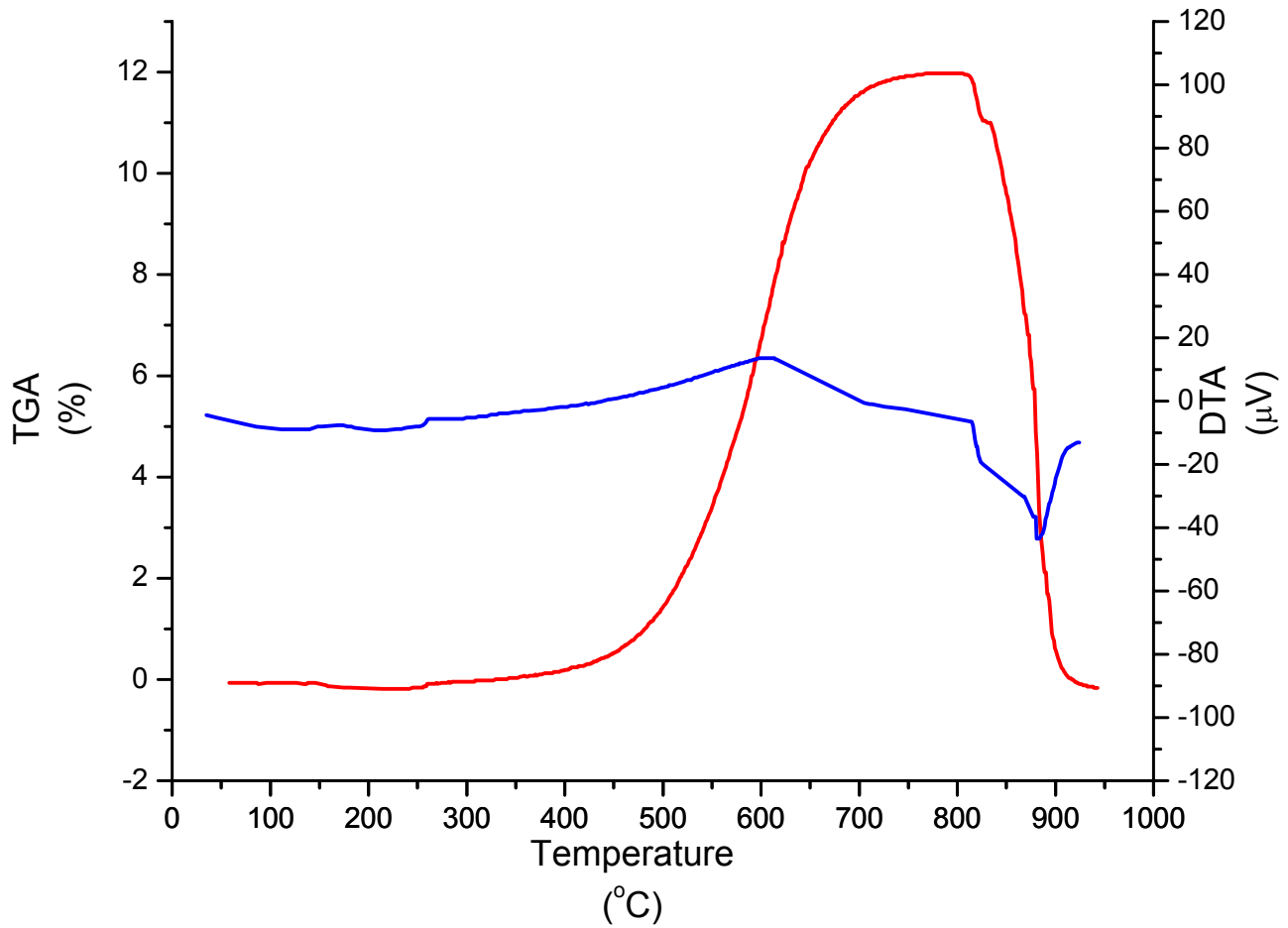
FAR EAST OFFICE
CERMET MATERIALS (FAR EAST) CO., LTD.
 ROOM 1003, 10TH FLOOR
 WORKINGBERG COMMERCIAL BLDG.
 41-47 MARBLE ROAD, NORTH POINT, HONG KONG
 TEL : (852) 2811 5889
 FAX : (852) 2960 0507
 EMAIL : albert@cermetmaterials.com



CERMET

Pd Powder Pd 200S

Pd 200S Typical Thermal Characteristics



Netzsch STA 449
Scan Rate: 10°C min⁻¹ in air

R06.03

U.S. HEAD OFFICE
CERMET MATERIALS INCORPORATED
6 MECO DRIVE
WILMINGTON, DELAWARE 19804
U.S.A.
TEL : (302) 999-1447
FAX : (302) 999-7211
EMAIL : cmi@cermetmaterials.com

EUROPEAN OFFICE
CERMET MATERIALS (EUROPE) LTD.
P.O. BOX 55
Llanelli
SA14 7YA, WALES, U.K.
TEL : (01269) 842-042
FAX : (01269) 831-777
EMAIL : steve@cermetmaterials.com

FAR EAST OFFICE
CERMET MATERIALS (FAR EAST) CO., LTD.
ROOM 1003, 10TH FLOOR
WORKINGBERG COMMERCIAL BLDG.
41-47 MARBLE ROAD, NORTH POINT, HONG KONG
TEL : (852) 2811 5889
FAX : (852) 2960 0507
EMAIL : albert@cermetmaterials.com